

QUICK SELECTION GUIDE

SENTRON Digital

Software solutions for greater energy efficiency and optimized operation
[siemens.com/sentron-digital](https://www.siemens.com/sentron-digital)

With SENTRON Digital, we're offering our customers software solutions tailored to their exact requirements, for efficient, reliable, and sustainable low-voltage power distribution.

The power and condition monitoring portfolio includes:

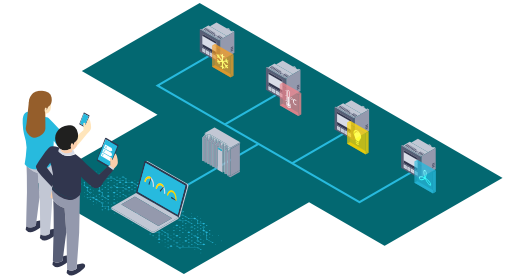
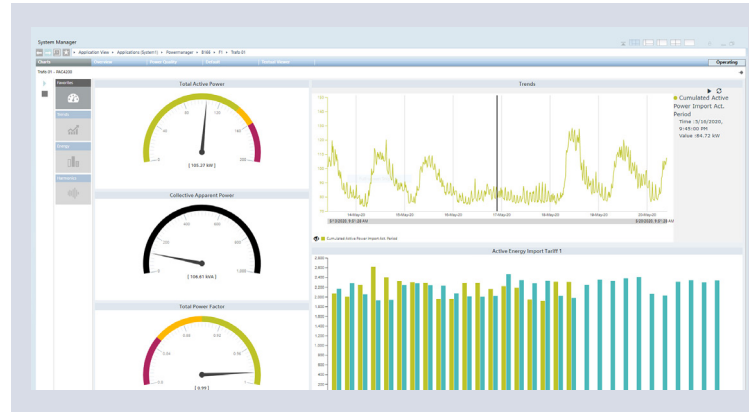
- SENTRON Powercenter 3000 for an easy start to power and condition monitoring
- SENTRON Powermind for cloud-based fleet management
- SENTRON Powermanager as an expert solution

Publisher
 Siemens AG
 Smart Infrastructure
 Electrical Products
 Siemensstraße 10
 93055 Regensburg
 Germany

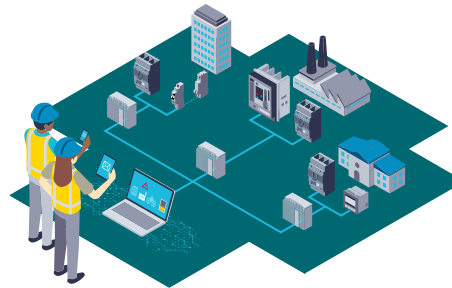
For the U.S. published by
 Siemens Industry Inc.
 100 Technology Drive
 Alpharetta, GA 30005
 United States

Article No. SIEP-B10384-00-7600
 DY 230144 DB 0723

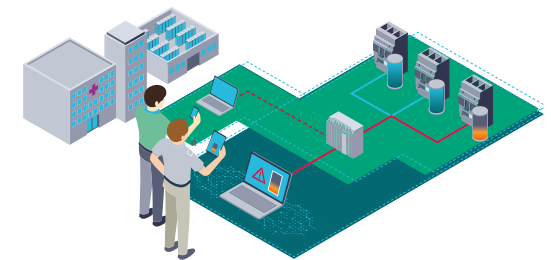
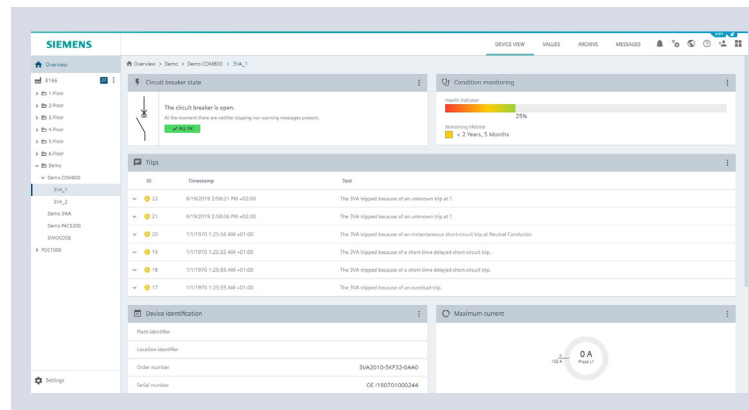
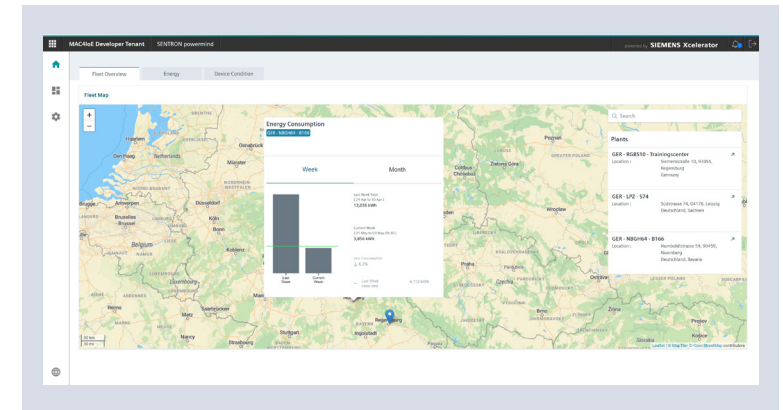
Subject to changes and errors. The information given in this document only contains general descriptions and/or performance features which may not always specifically reflect those described, or which may undergo modification in the course of further development of the products. The requested performance features are binding only when they are expressly agreed upon in the concluded contract.



Ready for **energy management** according to ISO 50001 and ISO 50003: Transparency in energy consumption, benchmarking with KPIs, and load profile analysis for optimized energy efficiency.



The SENTRON Powermind application permits cloud-based real-time analysis of the power and condition data of individual locations or multiple distributed properties.



Efficient facility management of **critical infrastructures** to reduce downtimes: condition monitoring of devices for optimized maintenance planning.

SETRON Digital: Quick Selection Guide



Attributes	SETRON Powercenter 3000	SETRON Powermind	SETRON Powermanager
Platform	IPC	Insights Hub	PC (Windows)
Data export	x	x	x
Reporting			
Predefined reports	-	x (snapshot function)	x
Customizable reports	-	-	x
Fleet management			
For service providers to support multiple end customers	-	x	-
For distributed properties of a company	-	x	x
Real-time and historic data			
Real-time data – graphical	-	x (drag indicator)	x (Measuring element + line chart)
Historical data	x	x	x
Dashboards			
Predefined dashboards for devices	x	x	x
Customizable dashboards	x	-	-
Communication			
Northbound interface	MQTT (third-party cloud)	-	OPC UA/DA
Southbound interface	Modbus	SETRON Powercenter 3000	Modbus, OPC UA/DA
Third-party device support	x	-	x
Limit value / threshold value	x	-	x
Alarms and notifications	x	-	x
Graphic editor	-	-	x
Monitoring of power quality (real-time data of the devices)	x	x	x
Condition monitoring	x (individual views)	x (individual & aggregated views)	x (individual & aggregated views)
Software update	Manual	Automatic	Manual
Purchase	Device purchase + optional licenses	Subscription + in-app purchases	License purchase

x = supported, - = not supported